

# IONAS

ELECTRIC COMMERCIAL MINI VAN

- MULTIPURPOSE
- COMPACT
- PRACTICAL

AVEVAI





# WHY IONAS?

## FOR ECO-FRIENDLY SMEs

IONA S embodies a combination of perfect size, robustness, and practicality, making it a resounding success in all aspects. It offers optimal comfort for the driver and delivers the necessary performance for everyday use.

Designed to meet the highest standards of market demands, the IONA S takes this van design to the next level. Its steel frame chassis provide exceptional resistance to deformation, ensuring perfect stability and safety.

Driving Range <sup>JCO8</sup>

**230** km\*

Battery Pack

**30** kWh

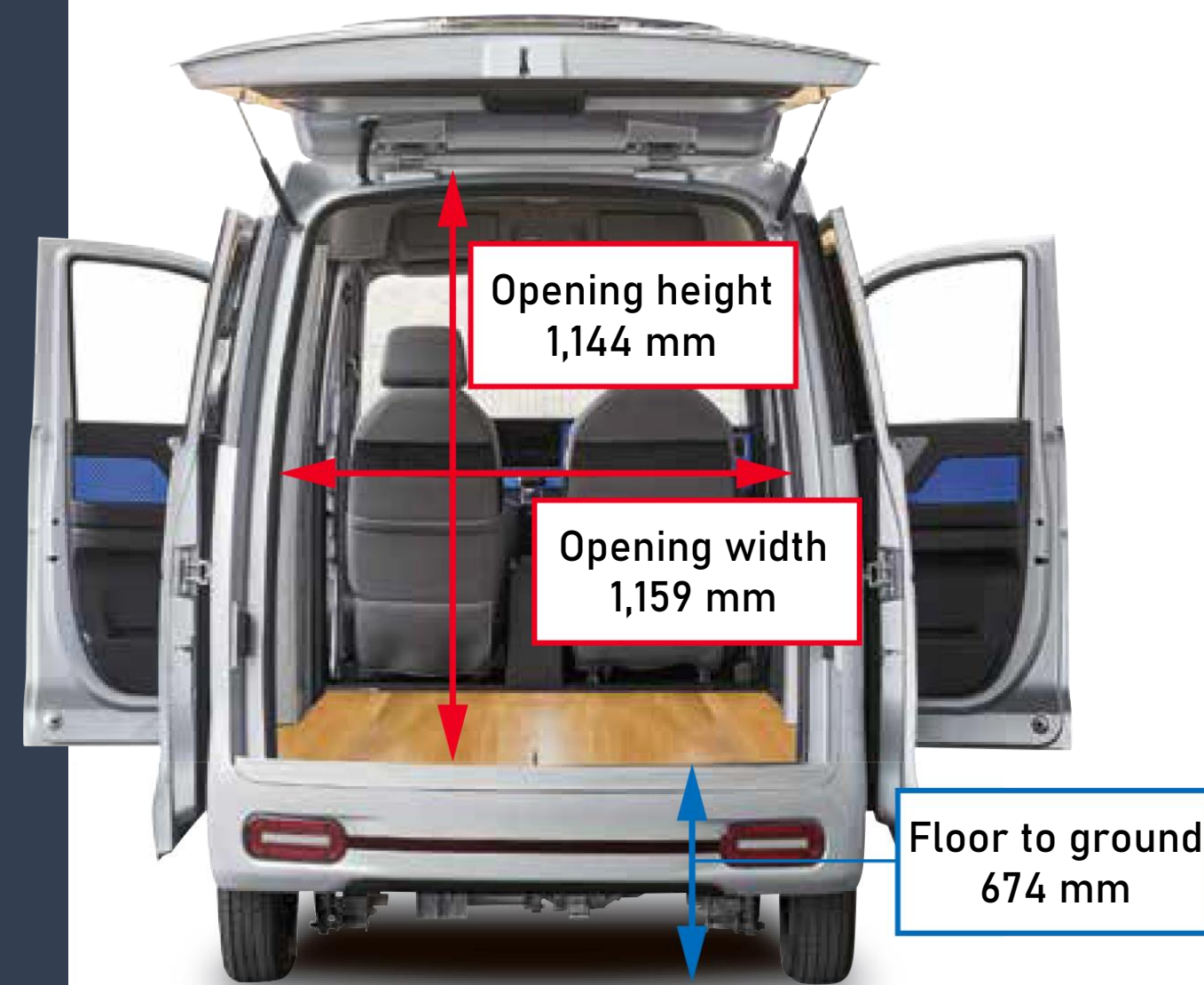
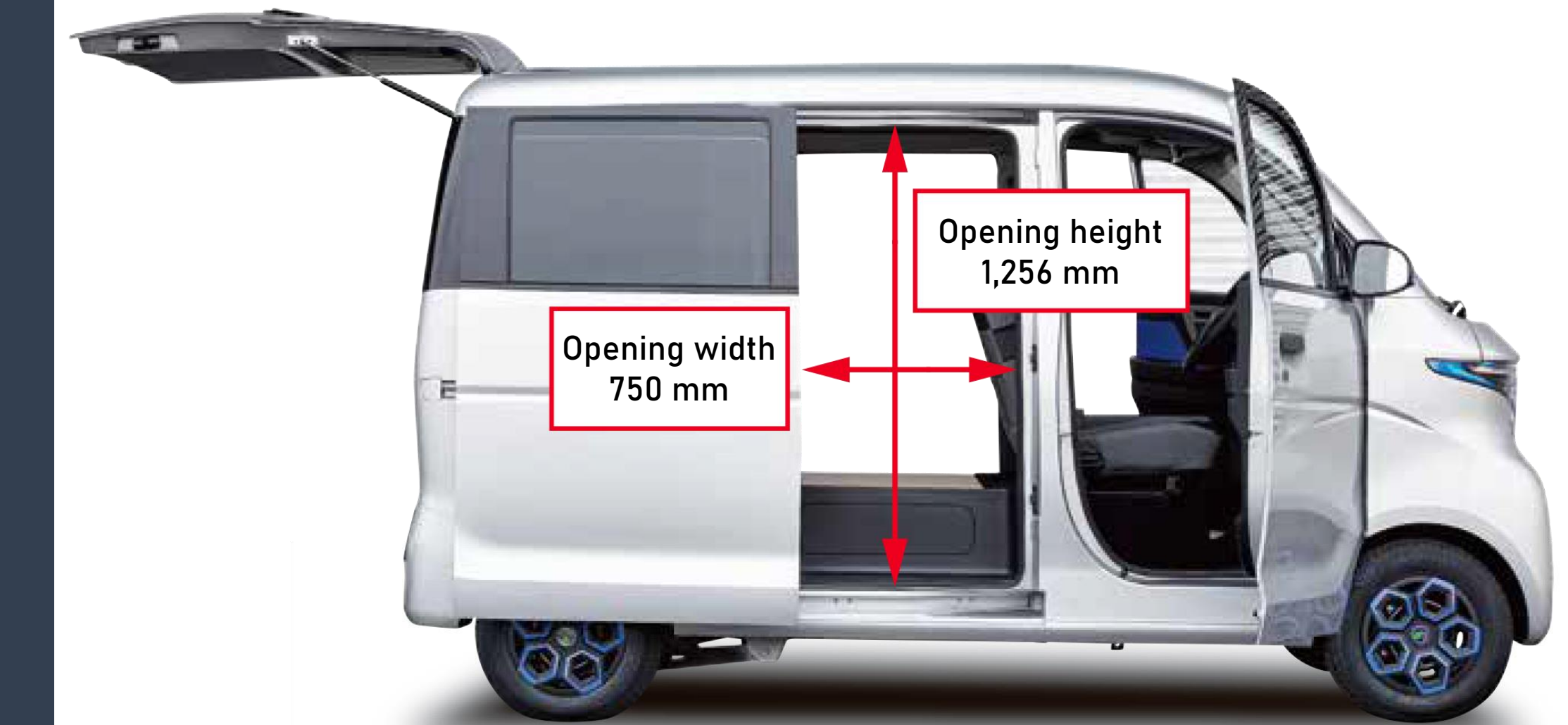
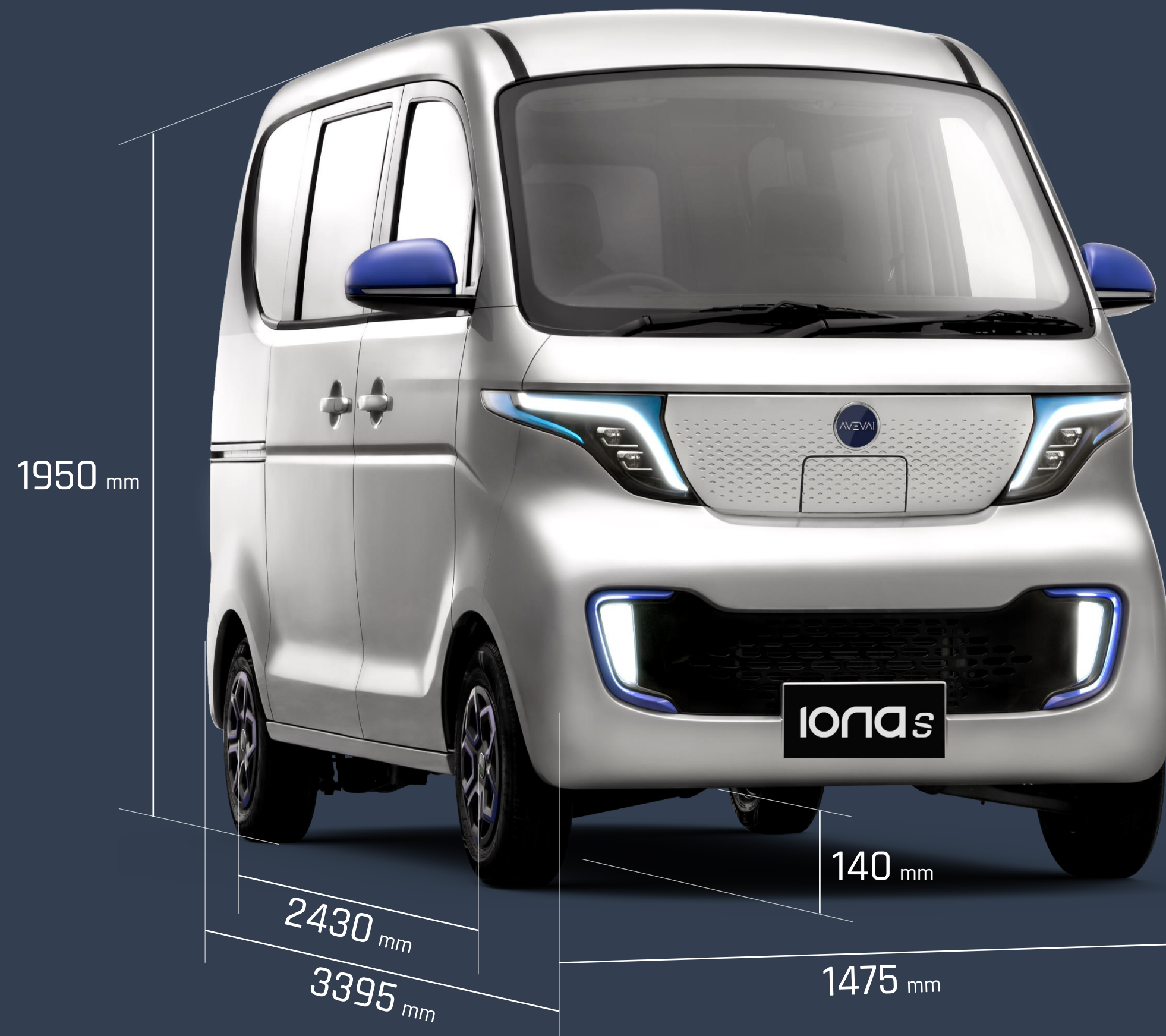
Max Speed

**100** km/h

\* Based on Ministry of Land, Infrastructure, Transport and Tourism examination value

# DIMENSIONS

The IONA S offers ample space and user-friendly features, making it convenient to use. It provides comfortable support for everyday work tasks, ensuring a pleasant and efficient experience.



## Cargo size

Various packages can be fully loaded with a wide range of options available.

SMALL	MEDIUM	LARGE
46 Boxes	17 Boxes	15 Boxes
W: 497 mm D: 315 mm H: 293 mm	W: 669 mm D: 319 mm H: 432 mm	W: 601 mm D: 450 mm H: 453 mm



# INTERIOR

User-centric interior design that seamlessly integrates driver feedback, providing a hassle-free and intuitive experience.



Air conditioner



UV protected glass



Cargo area center curtain



Center lock



Gear shifter (D N R)



11" center display



USB sockets (x2)



Power outlet



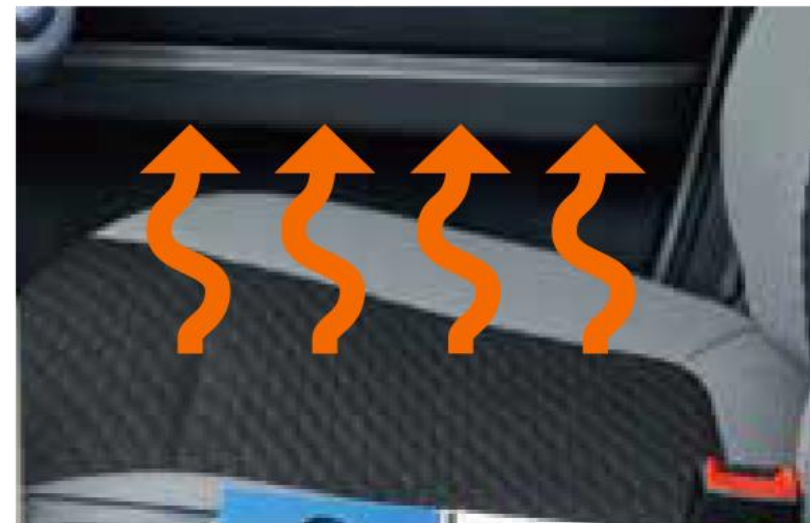
Smart key



Start/Stop button



Digital meter



Driver seat heater



Reverse camera



LED cargo lighting



Center box storage



Overhead storage



Door storage



Trolley right side storage



Left side storage box



Cargo area (floor)

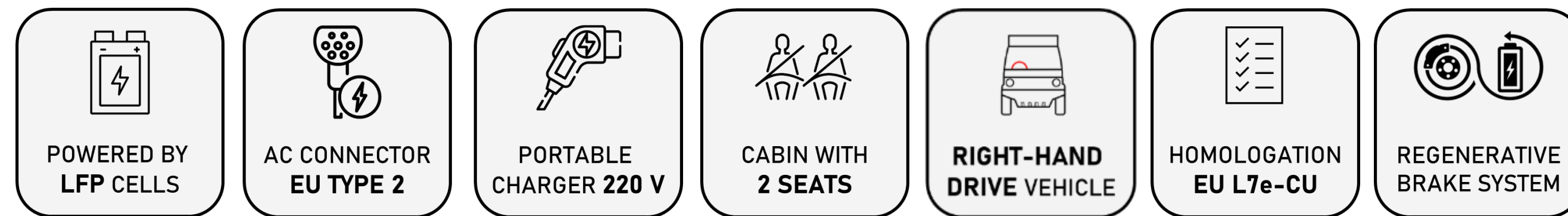
# INTERIOR DETAILS

# TECHNICAL SPECIFICATIONS



Vehicle type	Electric Mini (Kei) Van
Number of seats (including driver)	2
Dimensions L*W*H mm	3395×1475×1950
Wheelbase mm	2430
Tread Front/Rear mm	1300 / 1290
Curb weight kg	1130
Total weight kg	1590
Payload weight kg	350
Minimum ground clearance mm	130
Minimum turning radius m	4.4
Driving range JC08	230 km
Max. Speed km/h	100 km/h
Max. Power kW	30 kW
Driving Type	RWD

Max. Torque Nm	120 Nm
Battery type	LiFePO
Battery voltage	320 V
Battery pack capacity kWh	30.0 kWh
Charging energy calculation	s
SOH calculation	s
Heating system	s
OBC	6.6 kW
Rated output power	15 kW
Max output power	30 kW
Charging socket AC	Type 2
Charging socket DC	CCS 2
Tire	145R12 LT 8PR
Airbag driver / passenger	s



**Disclaimer:**

The battery pack capacity may/will degrade over time and usage. The actual driving range will vary depending on driving behaviors, charging intervals, driving speed, cargo load weight and weather conditions. The figures shown are for comparability purposes; only compare with other vehicles tested to the same technical procedures and similar vehicle weight class. The charging times are estimates. Charging stations must be Type 2 compatible. The permissible total cargo weight must not exceed. Technical specifications and data are valid at the time of publishing. The product images shown are for illustrative purposes only. Specifications are subject to change without prior notice.

# ionas

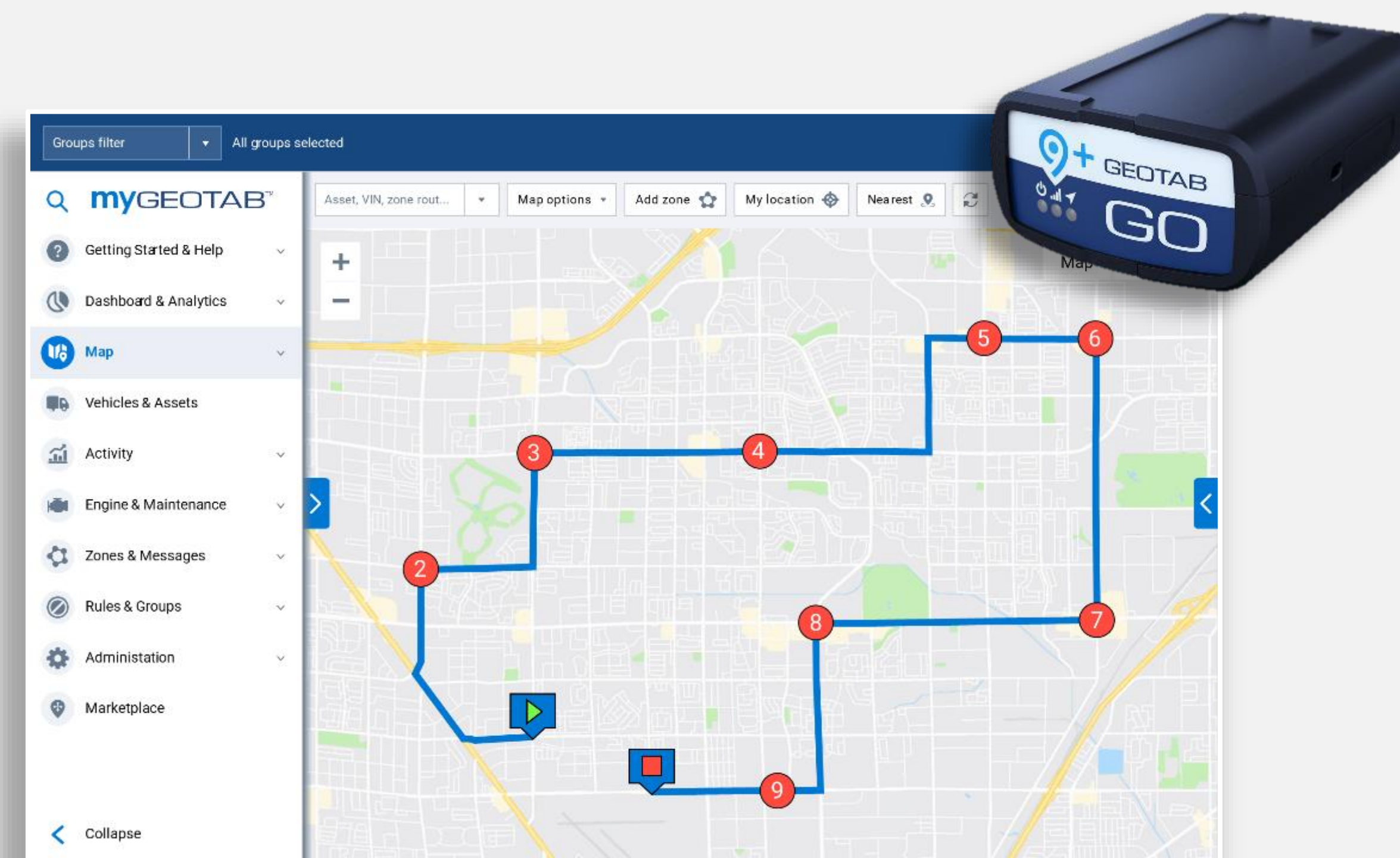
IN PICTURES



# GEOTAB<sup>®</sup> FLEET TELEMATICS

## What are the benefits of telematics?

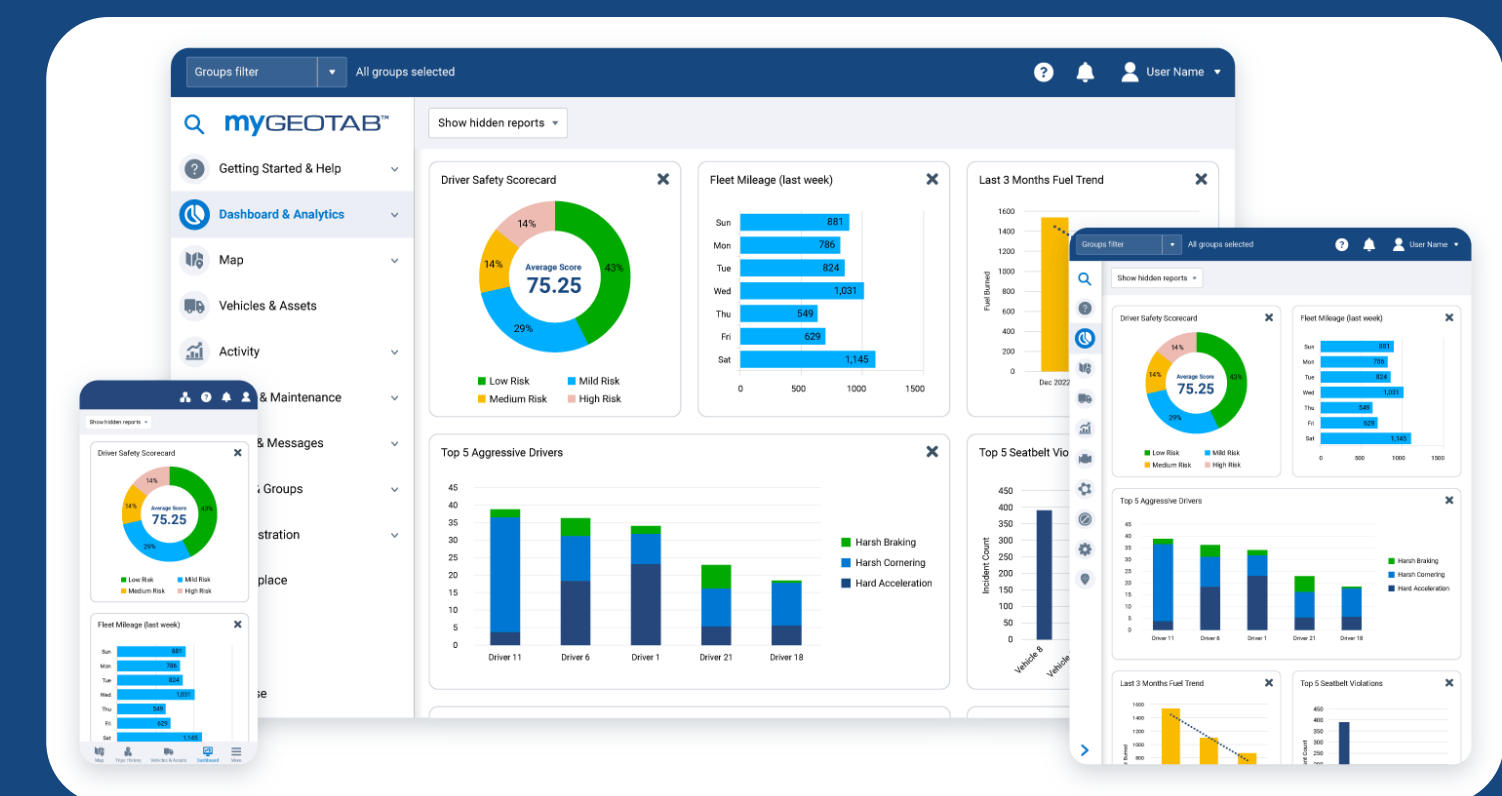
Telematic devices are easier to get up and running. Because they are pre-installed, a simple remote and contactless activation makes them operational. There is no vehicle downtime for installation and no additional hardware costs.



# IONAS

- Electrify your fleet with confidence
- Optimize your electric fleet operations
- Know your EV charging costs

The installed devices of GEOTAB capture the broadest and richest streams of vehicle data giving fleet managers more information about their vehicles and drivers. More information means better visibility, more control and better business outcomes.





AVEVAI

**ionas**

ELECTRIC COMMERCIAL MINI VAN



**AVEVAI PTE LTD**

Email: [contact@avevai.com](mailto:contact@avevai.com)

Website: [www.avevai.com](http://www.avevai.com)

IMPORTANT This digital information document is a guide. We have tried to make the information comprehensive and factual, but errors and changes can occur. AVEVAI and its dealers may change price and specifications at any time and may discontinue items depicted without notice and without obligation. This brochure was developed for Singapore specification vehicles only. Vehicle configuration and / or products shown may vary by region due to compliance regulations. Please consult your local dealer for further information.